

# VXL Template

## Sales Price Admin

User Instruction

17/01/2023

# Table of Content

- Table of Content ..... 1
- 1 Why VXL Templates?..... 2
- 2 What will it solve?..... 2
- 3 How does it work? ..... 2
- 4 Where can you find the VXL Template? ..... 2
- 5 Recommendations..... 2
- 6 The VXL Client ..... 3
  - 6.1 Export and Import Tasks ..... 3
- 7 Example - How to run the VXL template ..... 4
  - 7.1 Export OIS017/021 - Basic price data from M3 to Excel..... 4
  - 7.2 Import price data from Excel to M3..... 5
  - 7.3 Delete price lines from Excel to M3..... 7

## Version Control

Version	Date	Changed by	Comments
V1	12/14/22	N/A	N/A

## 1 Why VXL Templates?

In general, the purpose of a VXL template is to give our customers a good starting point in relation to data maintenance within a specific area in M3. A predefined VXL template can work for the customer exactly as it is but can also lack specific data or provide more data beyond what the customer maintains. The idea is that customers have the VXL template as a starting point and can themselves make the necessary small adjustments to make it perfect for their own needs.

## 2 What will it solve?

The purpose of this VXL template is to save time and cost on sales price maintenance in M3.

## 3 How does it work?

This function has tasks for both export from M3 to Excel and Import from Excel back to M3.

Export from M3 to Excel

- You can export Sales Price Lines from OIS021 from M3 to Excel

Import from Excel to M3

- You can import price lines from Excel back to OIS021 in M3.
  - Import updated price lines from Excel to M3
  - Import new price lines from Excel to M3
  - Import deleted price lines from Excel to M3
- It does not matter if the data you import is modified data from the export, or if you enter the data manually into the Excel sheet before the import.

## 4 Where can you find the VXL Template?

This template is installed in the Vince Template Company on the VXL server. The function is named "TEMPL\_Sales\_Price\_Admin"

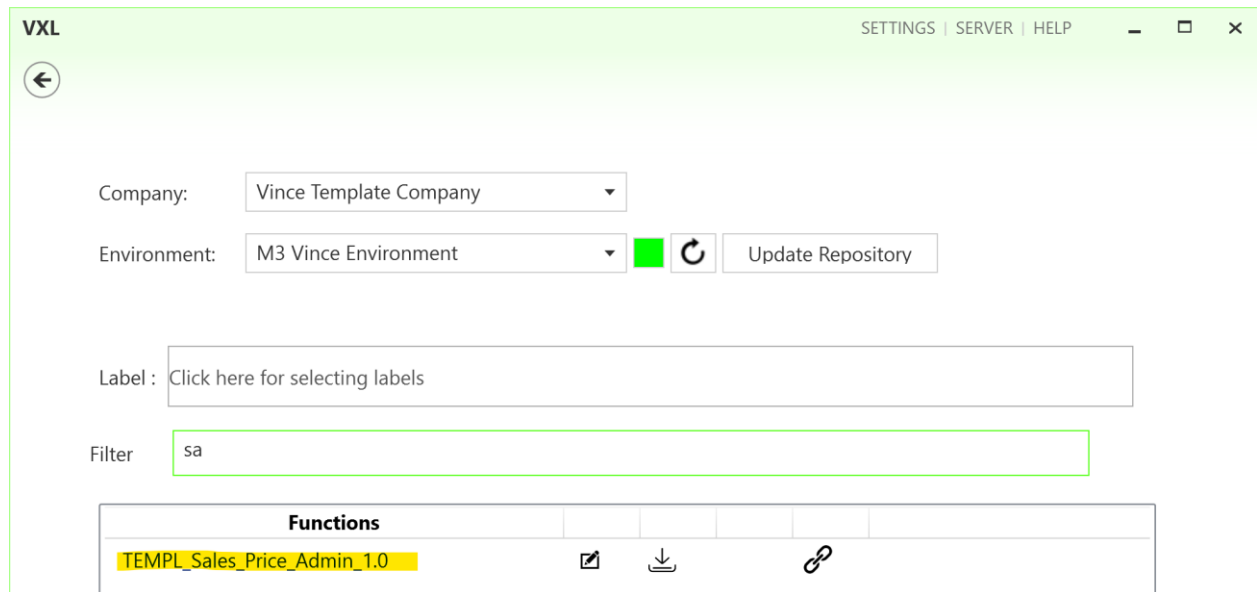
## 5 Recommendations

The template can be run and used as it is. If you want to make changes to the VXL template, we recommend that you copy the template to a new function and make your changes to this instead.

This VXL template has not been tested in depth by Vince so we recommend testing this thoroughly in the M3 test environment before this is lifted to the M3 production environment.

## 6 The VXL Client

In the VXL client you will find your new template "TEMPL\_Sales\_Price\_Admin"



When you open the function as shown below, it contains various tasks for export and import.

### 6.1 Export and Import Tasks

The VXL function contains the following tasks for export from M3 to Excel

The image shows three panels of tasks for export and import. Each panel has a title and a button. Arrows point from the text descriptions to the buttons.

- Export Price Lines**: This task is used for exporting OIS021 – Basic Price data from M3 to Excel. If you like, you may add additional filtering to this export task as shown in tutorial video no 6. The panel includes fields for 'Pricelist', 'Customer No', 'Currency', and 'Valid from', along with a 'Select a date' calendar icon and an 'Export Price Lines' button.
- Add/Update Lines**: This task is used for importing basic price data from Excel to M3. You may add new price lines or update existing price lines in OIS021– Basic prices. The panel includes an 'Add/Update Lines' button.
- Delete Price Line**: This task is used for deleting existing price lines in OIS021 from Excel to M3. You may mark the price line rows you want to delete with an "x" in Excel and they will be deleted in M3. The panel includes a 'Delete Price Line' button and an 'Import Detail' section with a 'Set x to delete' field, an 'Equal' label, and an 'x' input field.

## 7 Example - How to run the VXL template

### 7.1 Export OIS017/021 – Basic price data from M3 to Excel

- Enter the Price list id in the field "Pricelist". This field is mandatory.
- Enter the Currency in the field "Currency". This field is mandatory.
- Enter the Valid from date in the field "Valid from". This field is mandatory.
- If the price list is connected to a customer, enter the Customer number from date in the field "Customer No". This field is **NOT** mandatory.
- Then click the button "Export Price Lines", give the Excel-file a name and store it.

### Export Price Lines

Pricelist  ... Currency  ...

Customer No  ... Valid from

The price lines will then be exported to the excel file as shown below. Now you may start to maintain your price data in the Excel sheet.

Set x to delete	ITNO	Item number	ITDS	Item Name	SAPR	Current Sales Price	SAPR	New Sales Price	Change in %	SACD	Sales Price Qty	SPUN	Sales Price U/M	VFDT	Valid From Date	LVDT	Valid To date
		Y1001-Y01-016		Pur Style 1001 Col/Size		33.3			-100		1		EA	1/1/2009	12/31/2024		
		Y1001-Y02-016		Pur Style 1001 Col/Size		33.3			-100		1		EA	1/1/2009	12/31/2024		
		Y1001-Y03-016		Pur Style 1001 Col/Size		33.3			-100		1		EA	1/1/2009	12/31/2024		
		Y1050-KIT001		Test 2		65			-100		1		KIT	1/1/2009	12/31/2024		
		Y1051-KIT001		Kit Y1051 Z=Pack1/ 48		85			-100		1		KIT	1/1/2009	12/31/2024		
		Y50001		Example Laksefilet - Salgsvare		27.306			-100		1		EA	1/1/2009	12/31/2024		
		Y50002		Example Pur Accessory 50002		53.28			-100		1		EA	1/1/2009	12/31/2024		
		Y50003		Pur Accessory 50003-SC Order		8.95			-100		1		EA	1/1/2009	12/31/2024		
		Y50004		Example Pur Accessory 50004		3.75			-100		1		EA	1/1/2009	12/31/2024		

## 7.2 Import price data from Excel to M3

Run this task if you want to import (add and update) the edited Price Line data from Excel to M3. Below we have done the following changes to the data from the export:

- In Column E, "New Sales Price", we have raised the price on all the existing price lines with 20 % (by using a formula in excel).
- We have also added a couple of new price list lines (rows 21 and 22) and added a manual price for these two in column E.

By doing this change to the excel data, we will trigger both Update (row 12 to 20) on existing price lines and Add (row 21 and 22) of new sales price lines in M3.

Set x to delete	ITNO	ITDS	SAPR	SAPR	Change in %	SACD	SPUN	VFDT	LVDT
	Item number	Item Name	Current Sales Price	New Sales Price		Sales Price Qty	Sales Price U/M	Valid From Date	Valid To date
	Y1001-Y01-016	Pur Style 1001 Col/Size	33.3	39.96	20	1	EA	1/1/2009	12/31/2024
	Y1001-Y02-016	Pur Style 1001 Col/Size	33.3	39.96	20	1	EA	1/1/2009	12/31/2024
	Y1001-Y03-016	Pur Style 1001 Col/Size	33.3	39.96	20	1	EA	1/1/2009	12/31/2024
	Y1050-KIT001	Test 2	65	78	20	1	KIT	1/1/2009	12/31/2024
	Y1051-KIT001	Kit Y1051 Z=Pack1/ 48	85	102	20	1	KIT	1/1/2009	12/31/2024
	Y50001	Example Laksefilet - Salgsvare	27.306	32.7672	20	1	EA	1/1/2009	12/31/2024
	Y50002	Example Pur Accessory 50002	53.28	63.936	20	1	EA	1/1/2009	12/31/2024
	Y50003	Pur Accessory 50003-SC Order	8.95	10.74	20	1	EA	1/1/2009	12/31/2024
	Y50004	Example Pur Accessory 50004	3.75	4.5	20	1	EA	1/1/2009	12/31/2024
	Y50031			42.53			#DIV/0!		
	Y50032			50.75			#DIV/0!		

Now it's time to import the data to M3.

- Make sure that your edited Excel file is saved and closed.
- Click the button "Add/Upd Lines" and select the excel file you want to import.

Add/Update Lines

Add/Update Lines

When the import is done the Excel file will open up.

Scroll all the way to the right in the spread sheet to look at the API responses.

As we see from the screen dump below:

- Column U "Total" states that everything is OK.
- Column V, "AddBasePrice" failed in rows 12 to 20 with an error message. This is not a problem since it is not possible to add price lines that already exists in M3, so this is correct.
- The rows 21 and 22 in column V is OK since this is two new Locations did not exist in M3 before.
- The Column W (UpdBasePrice) is ok on all the existing lines (12-20), but has no response for the new price lines (21-22) since a rule in the configurator is set not to run this API if the AddBasePrice transaction is OK.

	U	V	W	X
	<b>RESPONSE</b>			
	<b>TOTAL</b>	<b>OIS017MI AddBasePrice</b>	<b>OIS017MI UpdBasePrice</b>	<b>OIS017MI DelBasePrice</b>
	OK	NOK	Item number Y1001-Y01-016 already in price list	OK
	OK	NOK	Item number Y1001-Y02-016 already in price list	OK
	OK	NOK	Item number Y1001-Y03-016 already in price list	OK
	OK	NOK	Item number Y1050-KIT001 already in price list	OK
	OK	NOK	Item number Y1051-KIT001 already in price list	OK
	OK	NOK	Item number Y50001 already in price list	OK
	OK	NOK	Item number Y50002 already in price list	OK
	OK	NOK	Item number Y50003 already in price list	OK
	OK	NOK	Item number Y50004 already in price list	OK
	OK	OK		
	OK	OK		

If we check the price lines in M3 we see that the existing lines have been updated and we also have two new lines imported.

Item number	Sales price	Sqty	U/M	Net	Cost price	Margin	Rate	Camp	Matr
Y1001-Y01-016	39.9600	1	EA	0	17.7500	22.2100	55.5806		
Y1001-Y02-016	39.9600	1	EA	0	17.5000	22.4600	56.2062		
Y1001-Y03-016	39.9600	1	EA	0	17.5000	22.4600	56.2062		
Y1050-KIT001	78.0000	1	KIT	0	53.3500	24.6500	31.6026		
Y1051-KIT001	102.0000	1	KIT	0	74.9000	27.1000	26.5686		
Y50001	32.7700	1	EA	0	10.2000	22.5700	68.8740		
Y50002	63.9400	1	EA	0	14.5500	49.3900	77.2443		
Y50003	10.7400	1	EA	0	5.0500	5.6900	52.9795		
Y50004	4.5000	1	EA	0	3.0000	1.5000	33.3333		
Y50031	42.5500	1	EA	0	5.7750	36.7750	86.4277		
Y50032	50.7500	1	EA	0	0.0000	50.7500	00.0000		

### 7.3 Delete price lines from Excel to M3

Run this task if you want to delete Price Lines in OIS021 in M3 from Excel.

As you can see from the screen dump below, rows number 21 and 22 are marked with a lower case x in column A "Set x to delete"

By doing this, these two lines will be deleted in M3 when this Excel file is imported.

Set x to delete	Item number	Item Name	Current Sales Price	New Sales Price	Change in %	Sales Price Qty
	Y1001-Y01-016	Pur Style 1001 Col/Size	33.3	39.96	20	1
	Y1001-Y02-016	Pur Style 1001 Col/Size	33.3	39.96	20	1
	Y1001-Y03-016	Pur Style 1001 Col/Size	33.3	39.96	20	1
	Y1050-KIT001	Test 2	65	78	20	1
	Y1051-KIT001	Kit Y1051 Z=Pack1/ 48	85	102	20	1
	Y50001	Example Laksefilet - Salgsvare	27.306	32.7672	20	1
	Y50002	Example Pur Accessory 50002	53.28	63.936	20	1
	Y50003	Pur Accessory 50003-SC Order	8.95	10.74	20	1
	Y50004	Example Pur Accessory 50004	3.75	4.5	20	1
x	Y50031			42.55	#DIV/0!	1
x	Y50032			50.75	#DIV/0!	1



Now it's time to delete these rows in M3.

- o Make sure that your Excel file is saved and closed.
- o Click the button "Delete Location" and select the excel file you want to import.

### Delete Price Line

---

**▼ Import Detail**

Set x to delete                      Equal

When the delete is done the Excel file will open up.

Scroll all the way to the right in the spread sheet to look at the API responses.

- o Column X, "DelBasePrice" is OK for the two rows marked for deletion in column A which means that this deletion was successful.

TOTAL		RESPONSE	
	OIS017MI AddBasePrice	OIS017MI UpdBasePrice	OIS017MI DelBasePrice
OK	NOK	Item number Y1001-Y01-016 already in price list	OK
OK	NOK	Item number Y1001-Y02-016 already in price list	OK
OK	NOK	Item number Y1001-Y03-016 already in price list	OK
OK	NOK	Item number Y1050-KIT001 already in price list	OK
OK	NOK	Item number Y1051-KIT001 already in price list	OK
OK	NOK	Item number Y50001 already in price list	OK
OK	NOK	Item number Y50002 already in price list	OK
OK	NOK	Item number Y50003 already in price list	OK
OK	NOK	Item number Y50004 already in price list	OK
OK	OK		OK
OK	OK		OK

If we look at the OIS021 - Price Lines in M3 we find that the lines we marked for deletion are gone.

Price list	Y2	Ex.Pr.List2 USD	Valid from	090101
Currency	USD		Valid to	241231
Customer				
Sales campaign				

Item number				Sales price	Spqty	U/M	Net	Cost price	Margin	Rate	Camp	Matr
<input type="text"/>												
Y1001-Y01-016				39.9600	1	EA	0	17.7500	22.2100	55.5806		
Y1001-Y02-016				39.9600	1	EA	0	17.5000	22.4600	56.2062		
Y1001-Y03-016				39.9600	1	EA	0	17.5000	22.4600	56.2062		
Y1050-KIT001				78.0000	1	KIT	0	53.3500	24.6500	31.6026		
Y1051-KIT001				102.0000	1	KIT	0	74.9000	27.1000	26.5686		
Y50001				32.7700	1	EA	0	10.2000	22.5700	68.8740		
Y50002				63.9400	1	EA	0	14.5500	49.3900	77.2443		
Y50003				10.7400	1	EA	0	5.0500	5.6900	52.9795		
Y50004				4.5000	1	EA	0	3.0000	1.5000	33.3333		